

2021 VOYAGES

TASMANIA

COASTAL WILDERNESS EXPEDITIONS BY SMALL SHIP



- › Coastal Wilds of Tasmania
- › Tasmania Circumnavigation
- › Coastal Treks of Tasmania
- › A Yachtsman's Cruise: Sydney to Hobart



coralexpeditions
AUSTRALIA'S PIONEERING CRUISE LINE

WILDERNESS, WILDLIFE & CONVICT HISTORY FOR TRUE EXPLORERS

Australia's island state is poised at the edge of the world, where the Southern, Indian and Pacific Oceans collide. Here, pristine World Heritage wilderness and national parks teem with native wildlife and Tasmania's natural beauty sees rugged mountain ranges culminate in soaring coastal cliffs and crescent-shaped beaches.

Amidst this pristine, natural backdrop, Tasmania's intriguing history is displayed in compelling convict heritage and historic sites, while fertile pastures and verdant valleys produce a bounty of world-renowned food and wine, making a Tasmanian expedition cruise tantalising for all the senses.

This season, a longer voyage enables us to explore in more detail. Relax and immerse yourself in Tasmania's coastal wilds.



Meet our Guides



Dawn Singleton

With over 24 years at sea, Dawn is a seasoned Scuba Instructor with a passion for the marine environment. Earning her stripes driving vessels, Dawn has been fortunate to circumnavigate the world almost twice, visiting and leading expeditions in many different countries and remote areas. She has a passion for photography, biology and the natural world.



Steve Cox

Steve has been with Coral Expeditions for over 10 years, and brings a varied skill set to his job as Expedition Leader. He has previously worked as a dive instructor, tour guide, and professional cricketer. He is also a qualified Dive Instructor and an avid photographer. Steve is skilled at creating authentic expedition experiences and is a strong advocate for the conservation of the world's oceans.

INCLUSIONS

- › All excursions and sightseeing
- › Use of Xplorer, Zodiacs and kayaks
- › Daily lectures and briefings
- › All meals, chef-prepared on board
- › Selected wines, selected beers, juices, and soft drinks served with lunch and dinner
- › Coffee and selection of teas
- › All entrance fees to National Parks and Ports
- › Tips and gratuities

WHAT'S NOT INCLUDED

- › Pre and post flights, accommodation & travel insurance
- › Entry visas to Australia
- › Alcoholic beverages outside of lunch and dinner service
- › Telephone and Internet services
- › Laundry

Expedition Note:

These are expedition itineraries covering remote regions. Your Captain and Expedition Team will make changes to the daily schedule when necessary to maximise guest experience. These itineraries are indicative - some variation may occur due to weather conditions, safety or local community requirements.

We recommend that you do not arrive to the embarkation port on the day of boarding or depart on the day of disembarkation due to unexpected changes that may occur in scheduling.

IMAGES +1 Coral Discoverer entering Port Davey at sunrise

2 Climbing Mt Beattie, Port Davey | 3 An albino Bennett's Wallaby at Bruny Island

4 The dolerite columns of Tasman Peninsula | 5 A rare Orange-bellied parrot



Australian Hospitality at Sea

On board, you will discover a personalised style of cruising. With a maximum of 72 guests, there is no need for queues, waiting, or assigned seating. Instead, an intimate, convivial atmosphere shared with other like-minded travellers makes you feel at home.

Our Australian and New Zealand crew share their passion for our destinations and the explorer's life. Join our engine room tours, watch our chefs at work in the open galley, and chat with our Captain or officers on the bridge - they will be delighted to have your company.

Our guests love to mingle over drinks as the sun sets, enjoy daily educational presentations by our lecturers, participate in stargazing sessions after dark, or simply find a quiet corner on deck and enjoy the solitude.

The Expedition Experience

We explore remote locations that are hard to get to or not often touched by tourists, with shore excursions that promote environmental and cultural appreciation. Our small group size ensures that your experience is personal, with minimal impact on the communities and environments we visit.

Enjoy excursions or activities each day, guided by an expert Expedition Team who provide commentary on culture, history, and the region's unique geology, plants and wildlife to help you connect with these special places.

The Tastes of Tasmania

Tasmania's food and drink experiences are world-renowned. To enjoy true immersion in the region, our hospitality team has developed menus that showcase the best of Tasmania's produce, hand-selected and freshly prepared. Delight in all Tasmanian wines, craft beers and ciders, and locally-distilled whisky and vodka. Selected voyages will feature 'Masterclass' sessions by our executive hospitality team to excite your senses with Tasmania's remarkable flavours.



COASTAL WILDS OF TASMANIA

Expedition Highlights

- Spend two full days exploring Port Davey and Bathurst Harbour, with kayaking, bird-watching, and hiking revealing the secrets of this stunning wilderness
- Explore the beautiful Freycinet National Park: stroll the sweeping white sand of Wineglass Bay and hike to the lookout for a spectacular view
- Visit the Noah's Ark of Tasmania, Maria Island, and spot wombat, wallabies, endemic birds, and other wildlife
- Enjoy a behind-the-scenes tour at World Heritage-listed Port Arthur to gain a deep insight into the convict history
- From the sea, have a breath-taking view of the 300 metre high dolerite columns of the Tasman Peninsula, the highest sea cliffs in the southern hemisphere
- Taste Tasmania's remarkable fresh produce, cool-climate wines, and artisanal spirits throughout your expedition and at special wine-tastings and events

DEPARTURES & FARES

10 Nights - Departs: From Hobart aboard *Coral Discoverer*

17 January	Hobart		🌀		
27 January	Hobart		⚓		
06 February	Hobart				
26 February	Hobart				
	Bridge Deck Stateroom	Promenade Deck Cat A	Promenade Deck Cat B	Main Deck Cat A	Main Deck Cat B
Twin Share	\$10,990	\$9,350	n/a	\$7,600	\$7,200
Sole Use	n/a	n/a	\$12,975*	n/a	n/a

Prices are per person, listed in Australian Dollars (AUD) and include GST.

*Limited sole use occupancy available.

IMAGES +1 Hiking the hills at Bathurst Harbour | 2 A wombat spotted at Maria Island
3 Maria Island landscape | 4 Kayaking in Wineglass Bay



ITINERARY: 10 NIGHTS HOBART TO HOBART

DAY 1: DEPART HOBART

Board at Hobart's Princes Wharf at 4:00pm for a 5:00pm departure.

DAYS 2-10:

No two Tasmania cruises with Coral Expeditions will be the same as each expedition is crafted by our experienced Masters and Expedition Leaders, allowing us to quickly respond to favourable weather conditions to offer you the very best of Tasmania's flora, fauna and wild coastline. Below are the key destinations we visit.

PORT DAVEY & BATHURST HARBOUR

Here on the edge of the world in southwest Tasmania, the landscape is about as wild as it gets. This region has no road access, surrounded by raw, craggy-peaked mountains and drowned river valleys, where tannin-rich freshwater sits atop saltwater, tinting the ocean the colour of tea.

Spend two whole days (weather permitting) enjoying the rare opportunity to hike, kayak and take in the pristine natural environment of Port Davey, part of the Tasmanian Wilderness World Heritage Area. Explore the nooks and crannies of Bathurst Harbour and learn about intrepid explorers and Indigenous Australians who once walked this land. Enjoy the unforgettable experience of kayaking in Bramble Cove, hiking the button-grass hills, and looking for the rare Orange-bellied parrot at Melaleuca.

BRUNY ISLAND & ADVENTURE BAY

At Adventure Bay on the east coast of Bruny Island, hike along the dramatic coastal cliffs of Fluted Cape and spot the endemic Bennett's Wallaby. Cruising the base of the near-vertical dolerite cliffs in Xplorer, take a closer look at Penguin Island, which is connected to Fluted Cape at low tide. Learn about how southern right whales were almost hunted to extinction and Adventure Bay housed four whaling stations before the industry's decline in the mid-1840s. The ruins can be seen on a walk to Grassy Point.

MARIA ISLAND NATIONAL PARK

Maria Island can be referred to as a Noah's Ark for native Tasmanian species. The Maria Island National Park provides an ideal sanctuary, and is one of the best places in Australia to observe endemic birdlife as well as wombats, Cape Barren geese, Forester Kangaroos, Bennett's Wallabies, and pademelons.

Stroll amongst the ruins and restored buildings of the Darlington convict settlement and take a walk to the ruins of the former Probation Station or the striking formations of the Painted Cliffs, where rich iron deposits have stained the sandstone cliffs with coloured streaks of red, purple and orange.

FREYCINET NATIONAL PARK & SCHOUTEN ISLAND

The Freycinet Peninsula is a dramatic headland dominated by a pink-hued granite mountain range called The Hazards. Blessed with picturesque sweeping bays with white sand beaches like famed Wineglass Bay, much of the peninsula is designated as Freycinet National Park.

Join a guided hike along the Isthmus Track and be rewarded with magnificent views from the lookout, or swim and kayak the azure waters of Wineglass Bay. Cruising close to Ile des Phoques and Schouten Island, keep an eye out for large colonies of fur seals sunning themselves on the rocks.

TASMAN NATIONAL PARK & FORTESCUE BAY

The Tasman Peninsula is known for its fascinating geological formations like the Tessellated Pavement, Tasman Arch, and the soaring 300 metre high dolerite sea cliffs of Cape Raoul, Cape Pillar and Cape Hauy - the tallest in the southern hemisphere. Watch fur seals hauling out on the rocks, as well as playful dolphins feeding and magnificent albatross soaring amongst the updrafts created by the sea cliffs. We will visit Fortescue Bay, hike sections of the coastal Tasman Trail and kayak in Canoe Bay.

PORT ARTHUR HISTORIC SITE

One of Australia's most significant historic places, the UNESCO World Heritage-listed Port Arthur ruins stand sentinel on the Tasman Peninsula south of the narrow isthmus of Eaglehawk Neck. For more than 40 years, the Port Arthur penal colony housed convicts sentenced to hard labour before its heavy iron doors clanked shut for the last time in 1877.

Port Arthur has over 30 ruins and restored homes set in 100 acres of landscaped grounds. Join an exclusive 'behind the scenes tour' with knowledgeable guides, including access to private collections and historic buildings not otherwise accessible to the public.

WOODBIDGE & HUON

Where the mouth of the Huon River meets D'Entrecasteaux Channel lies Port Huon, a small community at the heart of a fertile valley with the Hartz Mountains as a backdrop. The sheltered waters of the river allow us to visit the Wooden Boat Centre at Franklin where Tasmania's maritime heritage is kept alive through the production of hand-crafted timber boats.

We may visit Grandvewe Cheeses, an organic sheep farm, with time to learn about the cheese-making process and taste the 'ewenique' sheep's whey vodka at the Cellar Door.

DAY 11: ARRIVE HOBART

Disembark in Hobart at 8:00am

A post cruise transfer to the city or airport is included.



Refer to page 7-8 for themed expedition details.

CIRCUMNAVIGATION OF TASMANIA



Expedition Highlights

- › Enjoy a scenic flight over Port Davey for a bird's-eye view of Tasmania's Southwest wilderness
- › Visit remote Flinders Island - experience one of Tasmania's 'Great Short Walks' in Strzelecki National Park
- › Cruise the scenic Tamar River to Launceston, and enjoy a visit to the Josef Chromy Vineyard
- › Gaze in awe at the 300m high sea cliffs at Tasman National Park - the highest in the southern hemisphere
- › Sample King Island's world-famous produce and visit King Island Dairy for a cheese tasting
- › Encounter iconic wildlife such as wombats, fur seals, and dolphins
- › Spend more than two days exploring in the World Heritage Area of Port Davey and Bathurst Harbour
- › Kayak and hike Tasmania's breathtakingly beautiful coast and visit remote areas all around the island
- › Journey Tasmania's isolated and mysterious West Coast, with the chance to land and explore a remote location (subject to weather)

DEPARTURE & FARES

16 Nights - Departs: 1 January 2021 from Hobart aboard *Coral Discoverer*

	Bridge Deck Stateroom	Promenade Deck Cat A	Promenade Deck Cat B	Main Deck Cat A	Main Deck Cat B
Twin Share	\$17,890	\$15,390	n/a	\$13,490	\$12,790
Sole Use	n/a	n/a	\$21,135*	n/a	n/a

Prices are per person, listed in Australian Dollars (AUD) and include GST.

*Limited sole use occupancy available.

IMAGES +1 Xplorer on the shore, Adventure Bay | 2 Beach stroll, Bathurst Harbour
3 Trousers Point, Flinders Island | 4 Freshly-shucked Tasmanian oysters



ITINERARY: 16 NIGHTS HOBART TO HOBART

DAY 1: DEPARTS HOBART

Board in Hobart at 4:00pm for a 8:00pm departure.

DAYS 2-14:

The below itinerary is indicative only - your Expedition team may alter your itinerary to make the most of weather conditions.

FORTESCUE BAY & TASMAN PENINSULA

The Tasman Peninsula is known for its fascinating geological formations like Devil's Kitchen, the Blowhole, and Tasman Arch. The soaring 300 metre high dolerite sea cliffs of Cape Raoul, Cape Pillar and Cape Raoul are the tallest in the southern hemisphere. The coastal waters here are a magnet for marine life. Watch fur seals hauling out on the rocks, as well as playful dolphins feeding and magnificent albatross which soar amongst the updrafts created by sea cliffs. We will visit Fortescue Bay, hike the coastal Tasman Trail and kayak in Canoe Bay.

MARIA ISLAND

Maria Island can be referred to as a Noah's Ark for native Tasmanian species. The Maria Island National Park provides an ideal sanctuary, and is one of the best places in Australia to observe endemic birdlife as well as wombats, Cape Barren geese, Forester Kangaroos, Bennett's Wallabies, and pademelons.

Stroll amongst the ruins and restored buildings of the Darlington convict settlement and take a walk to the ruins of the former Probation Station or the Fossil Cliffs to discover 290 million year old fossils beneath your feet and wildlife all around.

FREYCINET PENINSULA & WINEGLASS BAY

The Freycinet Peninsula is a dramatic headland dominated by a pink-hued granite mountain range called The Hazards. Join a guided hike along the Isthmus Track, walk to the lookout to be rewarded with magnificent views, or swim and kayak the azure waters of Wineglass Bay. Cruising close to Ile des Phoques and Schouten Island, keep an eye out for large colonies of fur seals sunning themselves on the rocks.

FLINDERS ISLAND & THE FURNEAUX GROUP

Visit wild and rugged Flinders Island, and marvel at the pink and gray granite mountain ranges of Strzelecki National Park. Explore beautiful Trousers Point beach, visit seaside townships, and see relics of Flinders maritime past at the Furneaux Museum.

DEAL ISLAND & KENT GROUP

Weather permitting, we visit the Kent Group of islands, Tasmania's northernmost National Park and a marine protected area. The waters of Kent Island are crystal clear, with the highest diversity of fish species in Australia.

TAMAR RIVER & LAUNCESTON

Spend two days on the scenic Tamar River. The river's banks abound with scenic reserves and notable vineyards. Explore the city of Launceston, before an event at Josef Chromy Wines.

STANLEY

Visit the charming seaside village of Stanley. Make the climb or chairlift up the Stanley's iconic landmark 'The Nut', for a spectacular 360 degree view. See historic colonial buildings and sample some of Stanley's world-famous fish and chips.

KING ISLAND

King Island is known for its fine produce. Tour the island with local guides and learn about the island's colourful history. Sample a brie at the King Island Dairy tasting room, with a chance to sample King Island beef and locally caught crayfish, hosted in the rustic home of local beef farmers.

WEST COAST EXPEDITION STOP

Home to striking mountain ranges, ancient pines and untamed rivers, the wild west coast is the heart of Tasmania's wilderness and a true frontier. Take in the dramatic scenery of this coastline, with a stop should the weather permit.

PORT DAVEY

Here on the edge of the world in southwest Tasmania, the landscape is about as wild as it gets. This region has no road access, surrounded by raw, craggy-peaked mountains and drowned river valleys, where tannin-rich freshwater sits atop saltwater, tinting the ocean the colour of tea.

Spend two whole days (weather permitting) enjoying the rare opportunity to hike, kayak and take in the pristine natural environment of Port Davey, part of the Tasmanian Wilderness World Heritage Area. Explore the nooks and crannies of Bathurst Harbour and learn about intrepid explorers and Indigenous Australians who once walked this land. Enjoy the unforgettable experience of kayaking in Bramble Cove, hiking the button-grass hills, and looking for the rare Orange-bellied parrot at Melaleuca.

ADVENTURE BAY, BRUNY ISLAND

At Adventure Bay on the east coast of Bruny Island, hike along the dramatic coastal cliffs of Fluted Cape and spot the endemic Bennett's Wallaby. Cruising the base of the near-vertical dolerite cliffs in Xplorer, take a closer look at Penguin Island, which is connected to Fluted Cape at low tide. Learn about how southern right whales were almost hunted to extinction and Adventure Bay housed four whaling stations before the industry's decline in the mid-1840s. The ruins can be seen on a walk to Grassy Point.

DAY 17: ARRIVE HOBART

Disembark in Hobart at 8:00am

A post cruise transfer to city or airport is included.



COASTAL TREKS OF TASMANIA

Expedition Highlights

- › Spend two full days exploring Port Davey and Bathurst Harbour, with kayaking, bird-watching, and hiking revealing the secrets of this stunning wilderness
- › Explore the beautiful Freycinet National Park: stroll the sweeping white sand of Wineglass Bay and hike to the lookout for a spectacular view
- › Visit the Noah's Ark of Tasmania, Maria Island, and spot wombat, wallabies, endemic birds, and other wildlife
- › From the sea and the cliff tops at Cape Hauy, have a breathtaking view of the 300 metre high dolerite sea cliffs of the Tasman Peninsula, the highest in the southern hemisphere
- › Taste Tasmania's remarkable fresh produce, cool-climate wines, and artisanal spirits throughout your expedition and at special wine-tastings and events
- › Hike scenic Fluted Cape at Bruny Island, challenging Bishop & Clerk at Maria Island, and remote Mt Beattie at Port Davey

DEPARTURES & FARES

10 Nights - Departs: 16 February from Hobart aboard *Coral Discoverer*

10 Nights - Departs: 08 March from Hobart aboard *Coral Discoverer*

	Bridge Deck Stateroom	Promenade Deck Cat A	Promenade Deck Cat B	Main Deck Cat A	Main Deck Cat B
Twin Share	\$10,990	\$9,350	n/a	\$7,600	\$7,200
Sole Use	n/a	n/a	\$12,975*	n/a	n/a

Prices are per person, listed in Australian Dollars (AUD) and include GST.

*Limited sole use occupancy available.

IMAGES +1 Hikers pause at the top of a hill in Port Davey, overlooking Mt Rugby

2 *Coral Discoverer* in Wineglass Bay | 3 A view of Fluted Cape, Bruny Island

4 A rare albino Bennett's Wallaby (*Macropus rufogriseus*) on Bruny Island



ITINERARY: 10 NIGHTS HOBART TO HOBART

DAY 1: DEPART HOBART

Board in Hobart at 4:00pm for a 5:00pm departure.

DAYS 2-10:

Coastal Treks follows the same itinerary as Coastal Wilds of Tasmania, with additional hiking and activities. Below are the key destinations we visit.

PORT DAVEY & BATHURST HARBOUR

In Port Davey, disembark to explore the 'Narrows' aboard our tender and hike Balmoral Hill or the Mount Beattie Track. The remote beauty of this wilderness area is enhanced by the breathtaking views over Bathurst Channel and Bathurst Harbour. Take in the surrounds of Melaleuca and the Needwonnee Walk.

Mt Beattie Walk Details:

- » 3 hours return
- » Grade 2/3 walk - some bush-walking experience recommended.

Mt Milner Walk Details:

- » 1 hour return
- » Grade 2/3 walk - some bush-walking experience recommended.

Mt Stokes Walk Details:

- » 2.5 hours return
- » Grade 2/3 walk - some bush-walking experience recommended.

BRUNY ISLAND & ADVENTURE BAY

The Fluted Cape walk on Bruny Island stays close to the coastal cliffs, providing spectacular views of Fluted Cape and the distant Tasman Peninsula. Get close to history, magnificent scenery, and abundant wildlife.

Fluted Cape Walk Details

- » 2.5 hours return (5.4km circuit)
- » Grade 4 walk - bush-walking experience recommended.

FREYCINET NATIONAL PARK & WINEGLASS BAY

The spectacular peninsula of Freycinet is crafted from pink granite peaks, surrounded by azure bays. Enjoy a hike to the Wineglass Bay Lookout and join a beachcombers walk along Wineglass Bay, voted one of the best beaches in the world.

Wineglass Bay Walk Details:

- » 1 - 1.5 hours return (3 km return)
- » Grade 3 walk - steep uphill climb one-way with rough steps.

MARIA ISLAND NATIONAL PARK

Bishop and Clerk is a challenging walk located on Maria Island. Pass through landscapes of grasslands and forest, to emerge overlooking a sweeping view of the Southern Ocean.

Bishop & Clerk Walk Details

- » 5 hours return (12 km return)
- » Grade 4 walk - bush-walking experience recommended.

TASMAN PENINSULA

Cape Hauy (part of the Three Capes Walk) is a medium difficulty walk through an extraordinary landscape. Experience views of Fortescue Bay and the dolerite columns at Cape Hauy.

Cape Hauy Walk Details:

- » 4 hours return (4.4 km one way)
- » Grade 3 walk - some bush-walking experience recommended.

PORT ARTHUR

An option on your cruise may be a visit to the UNESCO World Heritage-listed Port Arthur Historic Site, Australia's most intact convict site. In the company of Port Arthur's knowledgeable guides, join an exclusive 'behind the scenes tour'.

DAY 10: ARRIVE HOBART

Disembark in Hobart at 8:00am.

THEMED EXPEDITIONS

Coastal Treks of Tasmania

Two of our Tasmania departures, 16 February and 8 March, have a hiking focus. These special themed expeditions combine a coastal voyage with hikes on some of Tasmania's best coastal tracks (page 7-8).



Australian Geographic Society - Hosted Departure

We have partnered with the Australian Geographic Society to bring together our shared heritage of exploration and passion for Australian coastlines and conservation. This departure will be hosted by Justin Jones (pictured above), an adventurer, explorer, author and film-maker from the Australian Geographic Society.

Departs 17 January 2021



Wooden Boat Festival

Our Coastal Wilds of Tasmania departure on 27 January will visit the Australian Wooden Boat Festival. One of the world's most anticipated maritime events, this festival is held biennially in Hobart, and celebrates wooden boats of all sizes and Australia's maritime heritage. As well as your regular expedition stops, visit the Festival over two days, and explore what is on offer including the splendid Parade of Sail.

Departs 27 January 2021

A YACHTSMAN'S CRUISE: SYDNEY TO HOBART

Expedition Highlights

- > Enjoy a close up view of the start of the Sydney to Hobart Yacht Race from your vantage point off Sydney Heads.
- > Enjoy expert commentary and insights from our guest lecturer Sue Crafer as you watch the yachts race around the heads and sail south
- > Cruise the scenic south coast and cross the Bass Strait as we join the trailing fleet
- > Visit Bruny Island to spot wildlife, hike the magnificent Fluted Cape hike, and hear about the history of the region
- > Arrive in Hobart to enjoy the buzz of the race conclusion, stroll through the village to see the supermaxis moored or visit the Salamanca Markets
- > Ring in the New Year aboard the *Coral Discoverer*, and enjoy a sundeck cocktail party while watching the fireworks over the Derwent River



Sue Crafer

Sue Crafer is a veteran of no less than 15 Sydney to Hobart Yacht Races. She was a crew member aboard Ragamuffin in 2016 and one of an all-female crew to race in the Volvo Ocean (or Whitbread Round the World) Race in 1993/4.

DEPARTURES & FARES

6 Nights - Departs: 26 Dec 2020 from Sydney aboard *Coral Discoverer*

	Bridge Deck Stateroom	Promenade Deck Cat A	Promenade Deck Cat B	Main Deck Cat A	Main Deck Cat B
Twin Share	\$6,720	\$5,760	n/a	\$5,040	\$4,800
Sole Use	n/a	n/a	\$7,920*	n/a	n/a

Prices are per person, listed in Australian Dollars (AUD) and include GST.

*Limited sole use occupancy available.

ITINERARY: 6 NIGHTS SYDNEY TO HOBART

DAY 1: DEPART SYDNEY

Embark at Palm Beach at 9:00am for a 10:00am departure.

DAYS 2-6:

Our Expedition Team will craft the flexible itinerary around the weather conditions and views of the trailing fleet to offer you the best experience of the race and Tasmania's coastline. Below are key destinations we may visit.

SYDNEY: NORTH HEAD

Enjoy lunch while the ship positions off North Head. From the Explorer Bar, celebrate the start of the Sydney to Hobart Yacht Race and watch the fleet round the heads and sail south.

SCENIC COASTAL CRUISE & BASS STRAIT CROSSING

Cruise the scenic coastline from Sydney as yachting expert John Longley presents commentary on the race and lectures on yachting and maritime history. Enjoy presentations, spot yachts, or relax on deck as we cross the vastness of Bass Strait.

MARIA ISLAND NATIONAL PARK

Maria Island is referred to as a Noah's Ark for native Tasmanian species. It is one of the best places in Australia to observe endemic birdlife as well as wombats, Cape Barren geese, Bennett's Wallabies, and pademelons. Observe the rich history with a stroll amongst the remnants of the Darlington convict settlement, or take a walk to the striking Painted Cliffs.

FREYCINET NATIONAL PARK & SCHOUTEN ISLAND

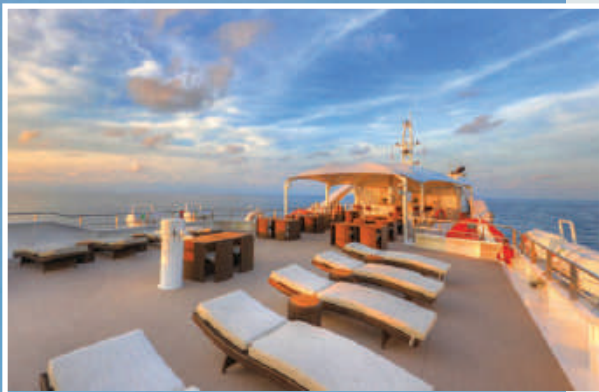
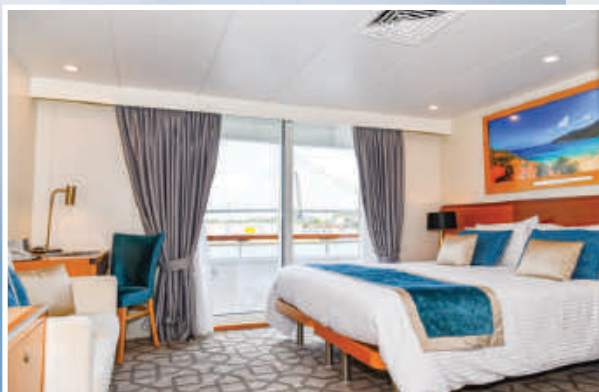
The Freycinet Peninsula is a dramatic headland dominated by a pink-hued granite mountain range called The Hazards. Join a guided hike along the Isthmus Track and be rewarded with magnificent views from the lookout, or swim and kayak the azure waters of Wineglass Bay. Visit Schouten Island to kayak and beachcomb, and cruise close to Ile des Phoques to see colonies of fur seals sunning themselves on the rocks.

PORT ARTHUR HISTORIC SITE

One of Australia's most significant historic places, the UNESCO World Heritage-listed Port Arthur penal colony housed convicts for more than 40 years, before its iron doors clanked shut in 1877. Join an exclusive behind-the-scenes tour with local guides.

DAY 6-7: ARRIVE HOBART

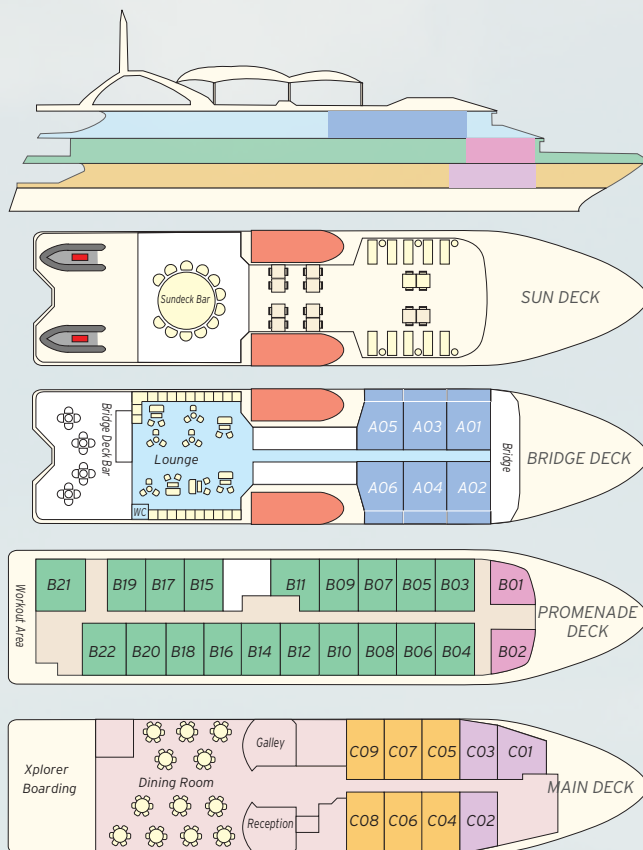
Arrive in Hobart on New Year's Eve, and enjoy celebrations and a special cocktail party on the sundeck overlooking the Derwent River fireworks. Disembark the following morning at 8:00am.



Classic small ship *Coral Discoverer* is built for environmentally responsible small-ship cruising, with refined steering capabilities, active stabilisers, shallow draught, and a nimble Xplorer tender to bring you close to remote places on the Tasmanian coast with ease.

With only 72 guests, an intimate atmosphere and warm Australian hospitality make you feel at home. Spacious lounge areas, communal dining and open decks provide the opportunity to relax or spend time with old and new friends.

CORAL DISCOVERER



- Bridge Deck Balcony Staterooms
• 20sqm • Private Balcony
- Promenade Deck Cat A Staterooms
• 18sqm • Picture Window
- Promenade Deck Cat B Staterooms
• 15sqm • Picture Window
- Main Deck Cat A Staterooms
• 18sqm • Porthole Windows
- Main Deck Cat B Staterooms
• 15sqm • Porthole Windows

Features

- One Xplorer tender & two Zodiacs
- Open Bridge
- Single seat dining
- Three cocktail bars
- Panoramic Sun Deck with daybeds
- Spacious lounge and deck areas





"A very different cruise experience - more like a large yacht. Extremely well organised. Quality of lectures, excursions and hikes were exceptional. Tasmania is beautiful - straight out of a fairy tale. We saw seals, dolphins, wallabies, kangaroos, many different types of birds. Soaring cliffs and white sand beaches."

GUEST TESTIMONIAL > 2019

①



②



③



④

IMAGE + 1 Coral Discoverer in Port Davey | 2 Beautiful Firetail (Stagonopleura bella) | 3 Hiking on Bruny Island | 4 Fur Seals, Ile des Phoques



EXPERIENCE CORAL ASSURANCE WHEN BOOKING DIRECT

- WE CARE:** Our team is motivated solely to ensure you have the trip of a lifetime.
WE KNOW: Our knowledge of our ships and itineraries ensure you get the best advice.
WE COMMIT: You will not get a better price elsewhere.

Our Range of Expeditions Include

> The Kimberley > Great Barrier Reef > Tasmania > Cape York & Arnhem Land > Papua New Guinea > Raja Ampat & The Spice Islands
> Islands of Indonesia > The South Pacific > New Zealand > Small Islands of the Indian Ocean



Contact us today or speak with your travel agent.

Online www.coralexpeditions.com
Email explore@coralexpeditions.com
Free call (Australia) 1800 079 545
Outside Australia +61 7 4040 9999
UK Sales Office +44 0203 934 7170

Head office PO Box 2093 Cairns 4870 QLD Australia
ABN 51 010 809 417 Issued October 2019



coralexpeditions
AUSTRALIA'S PIONEERING CRUISE LINE